

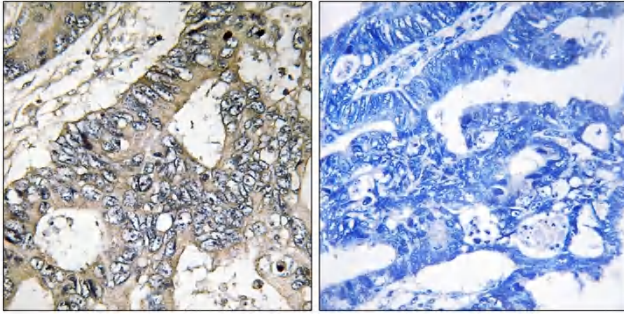


# GUF1 Polyclonal Antibody

<b>Catalog No</b>	YP-Ab-16169
<b>Isotype</b>	IgG
<b>Reactivity</b>	Human;Rat;Mouse;
<b>Applications</b>	IHC;IF;ELISA
<b>Gene Name</b>	GUF1
<b>Protein Name</b>	Translation factor GUF1 mitochondrial
<b>Immunogen</b>	The antiserum was produced against synthesized peptide derived from human GUF1. AA range:421-470
<b>Specificity</b>	GUF1 Polyclonal Antibody detects endogenous levels of GUF1 protein.
<b>Formulation</b>	Liquid in PBS containing 50% glycerol, 0.5% BSA and 0.02% sodium azide.
<b>Source</b>	Polyclonal, Rabbit,IgG
<b>Purification</b>	The antibody was affinity-purified from rabbit antiserum by affinity-chromatography using epitope-specific immunogen.
<b>Dilution</b>	IHC: 1/100 - 1/300. ELISA: 1/20000.. IF 1:50-200
<b>Concentration</b>	1 mg/ml
<b>Purity</b>	≥90%
<b>Storage Stability</b>	-20°C/1 year
<b>Synonyms</b>	GUF1; Translation factor GUF1; mitochondrial; Elongation factor 4 homolog; EF-4; GTPase GUF1; Ribosomal back-translocase
<b>Observed Band</b>	
<b>Cell Pathway</b>	Mitochondrion inner membrane ; Peripheral membrane protein ; Matrix side .
<b>Tissue Specificity</b>	Brain,Colon,Lung adenocarcinoma,Teratocarcinoma,
<b>Function</b>	similarity:Belongs to the GTP-binding elongation factor family. LepA subfamily.,
<b>Background</b>	This gene encodes a GTPase that triggers back-translocation of the elongating ribosome during mitochondrial protein synthesis. The protein contains a highly conserved C-terminal domain not found in other GTPases that facilitates tRNA binding. The encoded protein is thought to prevent misincorporation of amino acids in stressful, suboptimal conditions. An allelic variant in this gene has been associated with early infantile epileptic encephalopathy-40. Alternative splicing results in multiple transcript variants. [provided by RefSeq, Sep 2016],
<b>matters needing attention</b>	Avoid repeated freezing and thawing!

**Usage suggestions**

This product can be used in immunological reaction related experiments. For more information, please consult technical personnel.

**Products Images**

Immunohistochemistry analysis of paraffin-embedded human colon carcinoma tissue, using GUF1 Antibody. The picture on the right is blocked with the synthesized peptide.